

AJ-765

Auto Resetting Smoke Detector with Wireless Interconnect

Specifications

Detection Type:	Photoelectric Chamber
Power Source:	Battery up to 10 year life
Buzzer Output:	85db @ 3 meters
Wireless Frequency:	433MHz
Interconnect Range:	up to 50 meters apart
Dimensions:	40mm x Ø110mm
Operating Temp. Range:	0°C to 40°C
Compatible with:	AJ-718 Heat Detector AJ-R106 Remote Test & Hush Controller

Standards: EN14604:2005/AC:2008
& AS3786:2014

V1.010P

Operation & Testing

Routine Testing of smoke detectors should be done once a month.

To test the AJ-765 smoke detectors press the test button for less than 1 second. The sounder should activate.

Any other linked detectors should also activate within 20 seconds.

The smoke detectors sounder will automatically reset, when all the smoke has cleared.

Hush feature. When the smoke detector has been activated, pressing the test button for less than 1 second will silence that smoke detectors sounder.

Indication:

Green Flash every 60 seconds, Detector is performing correctly

Red Flash every 8 seconds plus beep, Faulty, Clean/Replacement required

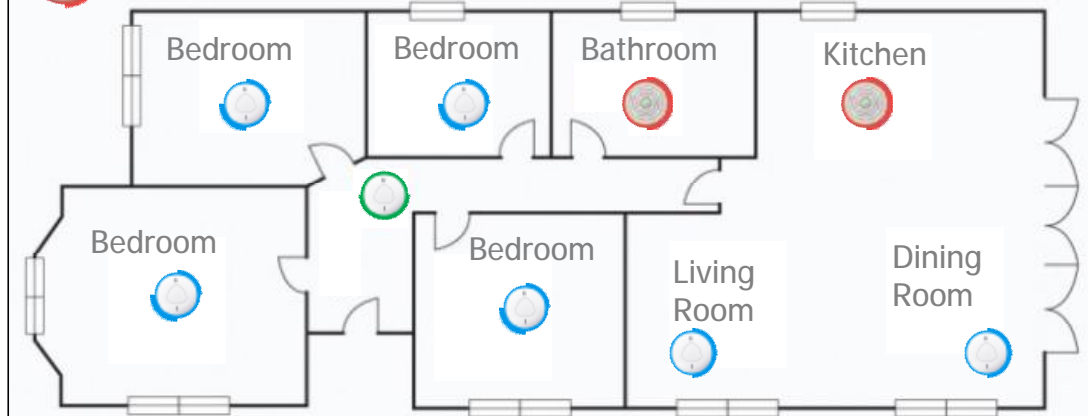
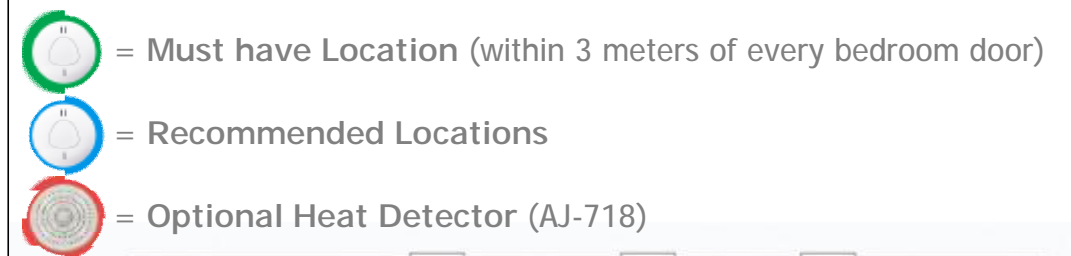
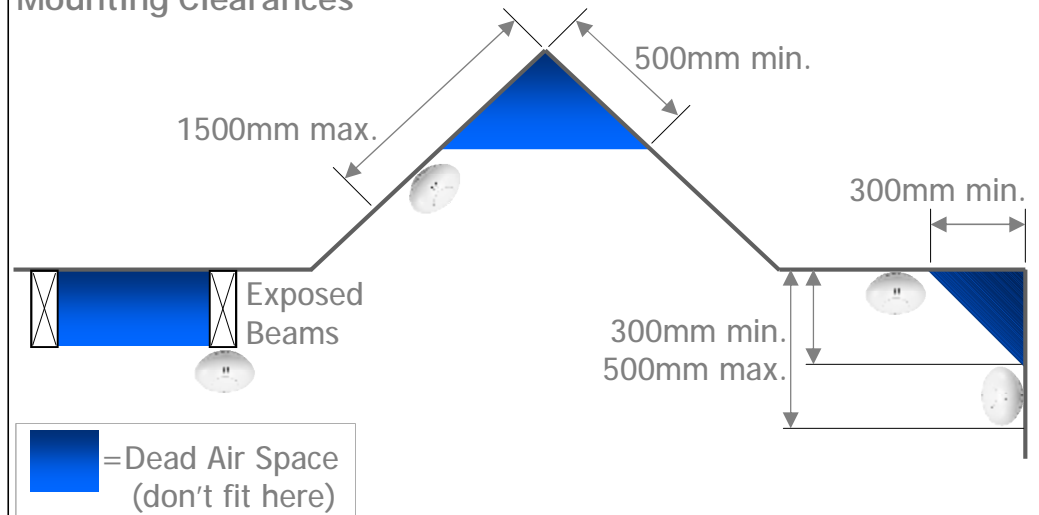
Red Flash every 50 seconds plus beep, Battery Low, Replacement required

Red Flashing with No beeping, in Hush mode for 9 minutes

**When using any aerosol smoke detector tester, please follow all instructions provided on the can. Improper use may result in degraded detector performance.*

***Routine cleaning is required to ensure no false triggers.*

Mounting Clearances



*Always refer to latest standards/building code for mounting locations

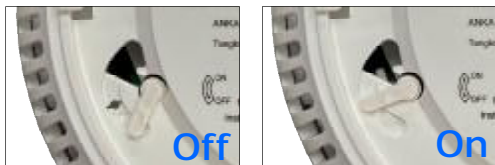
Pairing AJ-765 Smoke Detectors with Wireless Interconnect

Step 1.

Power On

Flick the switch on the bottom of each detector to the On position.

Note. Locking detectors to their base automatically turns them On.



Note. AJ-765 smoke detectors can also be paired with AJ-718 heat detectors and AJ-R106 remote.

Step 4.

Learn in a detector

Press & hold the test button of a slave detector, until the Green light has flashed 2 times.

The Red light will then start flashing as it tries to learn

The Green light will flash 3 times to indicate it has paired.

Repeat Step 4, on all other detectors until they have been paired.

Step 2.

Clear Memory

Press & hold the test button until the Green light has flashed 4 times.

The Green light will then flash back 3 times slowly.

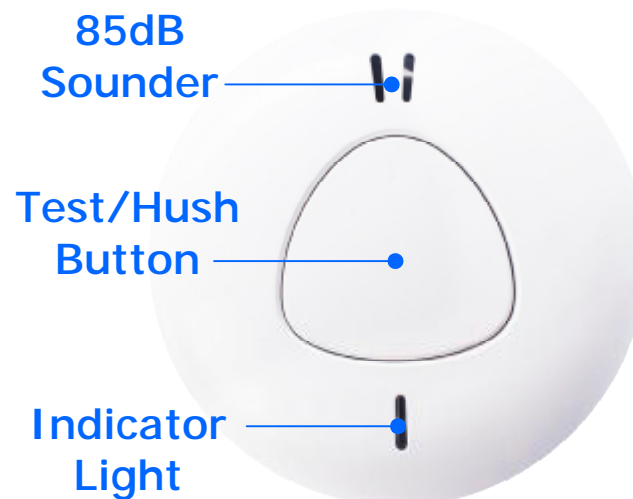
This must be done on all detectors before Pairing.

Step 3.

Select a Master

Press & hold the test button of the detector to be the master, until the Green light has flashed 3 times.

The Red light will then start flashing to indicate its in Pairing mode. (60 seconds maximum)



Step 5.

Wait 60 second before testing

ARROWHEAD ALARM PRODUCTS Ltd.
344b Rosedale Rd,
Albany, Auckland.
Ph. 09 414 0085
www.aap.co.nz
v1.00



Step 6.

Testing

Press the test button (for less than 1 second) on one of the detectors.

Within 20 seconds all detectors paired together should also activate.

Note. The hush button can be pressed on each detector, without affecting the wireless interlink test.